

LEGEND

- SURFACE MOUNT LIGHT
- RECESSED LIGHT
- SUSPENDED LIGHT
- ADJUSTABLE FLOOD LIGHT
- SUSPENDED TRACK LIGHTING
- RECESSED SHIELDED GROUND MTD. UPLIGHT
- TRACK HEAD WALL WASH LIGHT
- WALL MOUNT LIGHT
- RECESSED FLUORESCENT FIXTURE
- RECESSED FLUORESCENT FIXTURE
- SUSPENDED LINEAR FLUORESCENT FIXTURE
- SURFACE MOUNTED FLUORESCENT FIXTURE

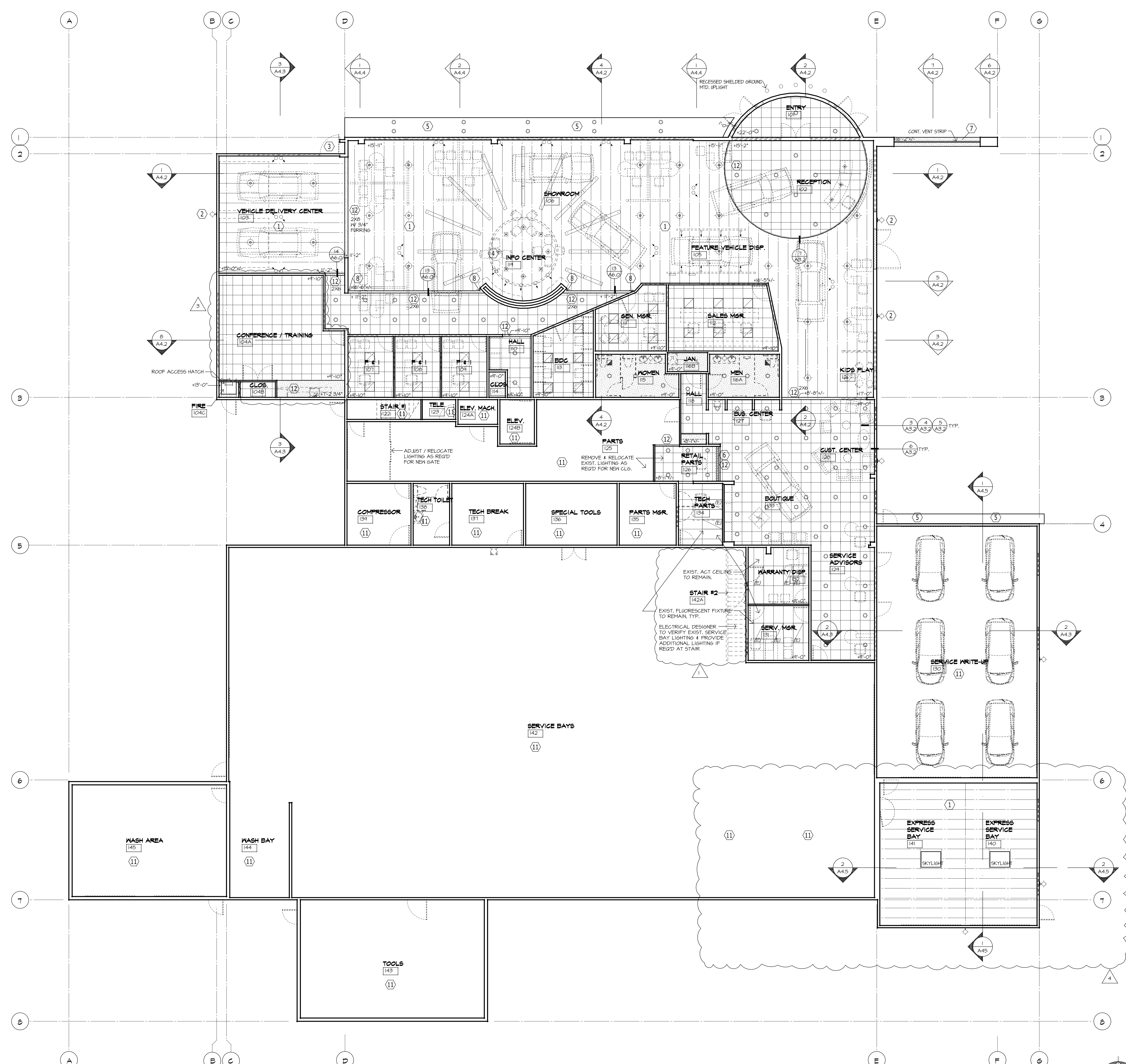
- 2X4 ACT CEILING
- 2X2 ACT CEILING
- GYPSUM BOARD CEILING (INT.) / EIFS FINISH (EXT.)
- OPEN TO ABOVE (INTERIOR STRUCTURE)
- SUPPLY AIR
- RETURN AIR

REFLECTED CEILING PLAN NOTES

- 1 EXPOSED STRUCTURE W/ PAINT FINISH.
- 2 "SHOEBOX" STYLE BUILDING DOWNLIGHT AS REQ'D TO SUPPLEMENT EXIST. SITE LIGHTING. ELECTRICAL DESIGNER TO VERIFY. SEE EXTERIOR ELEVATIONS FOR HEIGHT.
- 3 PROVIDE EXTERIOR EGRESS LIGHTING WHERE REQ'D.
- 4 15'-0" TO BOTT. OF SUSPENDED CEILING ELEMENT.
- 5 ACM PANEL SURFACE
- 6 SECURITY GRILLE
- 7 PAINTED SAND FINISH EXTERIOR EIFS FINISH SURFACE.
- 8 PROVIDE GYPSUM BOARD EXPANSION JOINT.
- 9 NOT USED.
- 10 NOT USED.
- 11 EXIST. LIGHTING TO REMAIN
- 12 GYPSUM BOARD BULKHEAD W/ PAINT FIN. SIZE AS NOTED

GENERAL NOTES

- SEE ELECTRICAL DRAWINGS FOR FIXTURE SCHEDULE.
- SEE ELECTRICAL SITE PLAN FOR EXTERIOR LIGHTING.
- GYPSUM BOARD CEILINGS AND SOFFITS TO BE (P-1) U.O.N.
- ALL OPEN CEILINGS TO DECK CONDITIONS TO BE (P-6) U.O.N.
- ALL ADJUSTABLE DOWNLIGHTS MUST BE LOCATED AND AIMED BY CONTRACTOR AND CLOSELY COORDINATED WITH THE DEALER FOR VEHICLE ACCENT, CUSTOMER GRAPHICS AND DISPLAYS.



FIRST FLOOR REFLECTED CEILING PLAN

CONSTRUCTION SET:
06/11/13



EXPANSION & REMODEL FOR...
LITHIA HONDA OF BEND
 2225 NE HIGHWAY 20
 BEND, OREGON

NEAL HUSTON & ASSOCIATES
 ARCHITECTS INC.



520 SW Powerhouse Dr.
 Suite 621
 Bend, Oregon 97702
 541.389.0991
 FAX 541.389.1344
 info@nealhuston.com
 www.nealhuston.com

Copyright © 2012 by
 Neal Huston & Associates Architects Inc.

REVISIONS	
DATE	DESCRIPTION
4/26/13	CITY CORRECTIONS
4/26/13	CITY CORRECTIONS
7/05/13	CONF. TRAINING RM.
8/27/13	EXPRESS SERV. ADDTN.
5	
6	

DRAWINGS:
 FIRST FLOOR REFLECTED
 CEILING PLAN

PROJECT # 1116
 CAD FILE: 1116rc13
 SCALE: 1/8" = 1'-0"
 DATE: 11/16/2012
 DRAWN BY: CK

A8.1